



PrinterOn Embedded Agent for Samsung Printers and MFPs

Setup Guide for PrinterOn Enterprise



mobile printing solutions | enterprise | education | public printing locations

Contents

- Chapter 1: Introduction 3
 - Overview: Setting up the PrinterOn Embedded Agent 4
 - PrinterOn service prerequisites 5

- Chapter 2: Installing the PrinterOn Embedded Agent application 1
 - Installing the Embedded Agent using the SyncThru Web Service portal 2
 - Configuring the PrinterOn Service settings 5

- Chapter 3: Enabling the PrinterOn Embedded Agent on the printer 7
 - Enabling the embedded agent using the Samsung SyncThru Web Service 7
 - Configuring the PrinterOn Service settings 9

- Chapter 4: Registering your Samsung printer 11
 - Creating the printer listing for the Samsung printer 12
 - Configuring the printer identity 13
 - Configuring the printer driver 14
 - Defining the output destination 14
 - Configuring the release settings 15
 - Adding the embedded agent to your PrinterOn service 17
 - Configuring the PrinterOn Embedded Agent software 18
 - Attaching the printer listing to the Embedded Agent 19

Chapter 5: Printing to your Samsung printer using the PrinterOn service	21
Submitting a print job to your Samsung printer	21
Printing using the Mobile printing workflow	22
Releasing print jobs	24
Releasing print jobs on printers with two- or four-line LCD displays	24
Releasing a print job on a printer with a touch panel	25
 Chapter 6: Configuring and customizing the embedded agent	 26
Restricting printer access	27
Enabling authentication for the embedded agent	27
Configuring the authentication workflow	28
Using your Samsung printer as a job router	30
Adding the printer to a Secure Release Anywhere pool	32
 Appendix A: Installing the PrinterOn Embedded Agent via USB	 33
 Appendix B: Locating registration information	 34
 Appendix C: Troubleshooting the PrinterOn Embedded Agent for Samsung	 35

1

Introduction

The PrinterOn Embedded Agent for Samsung Printers lets you turn your Samsung printer or MFP into an enterprise print solution. By activating the embedded agent software and registering the printer with PrinterOn, you can make your printer available to anybody, using just about any device, even if they are not connected to the same network as your printer.

For example, with the PrinterOn embedded agent enabled and configured, a user can submit a document to your Samsung printer:

- through any web browser, by uploading it your PrinterOn web print portal.
- from their mobile device, through the PrinterOn Mobile App for iOS or Android.
- by emailing the document directly to a printer-specific email address, assigned to it by PrinterOn.

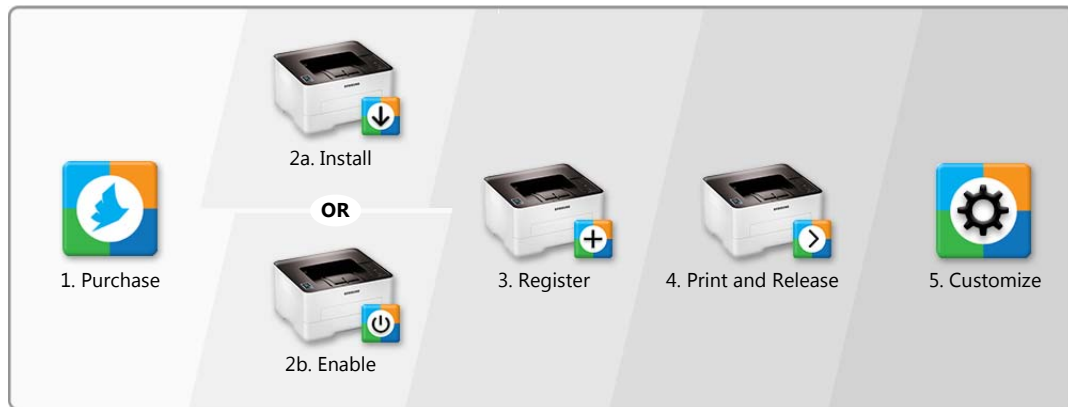
The PrinterOn solution balances access, convenience, and security. For example, you can use your existing LDAP server to restrict printer access to only authorized users. Or, you can require users to enter release codes at the printer before their documents are printed.

With a bit of configuration, you can have your printer installed and ready to receive print jobs. This document will lead you through the steps you'll need to complete to get set up, and then show you how to print to your new cloud print printer.

The PrinterOn Embedded Agent for Samsung Printers supports both PrinterOn Hosted and PrinterOn Enterprise solutions. **This guide is intended for PrinterOn Enterprise users only.** To configure the Embedded Agent with PrinterOn Hosted, please see the PrinterOn Embedded Agent Setup Guide for PrinterOn Hosted.

1.1 Overview: Setting up the PrinterOn Embedded Agent

To enable the PrinterOn embedded agent for your Samsung printer, you'll need to complete the following tasks:



1. **Purchase and install PrinterOn Enterprise.** To use the PrinterOn service to extend your Samsung printer beyond your local network, you must first have a PrinterOn license and have PrinterOn Enterprise installed on a local server.

For more information about purchasing PrinterOn Enterprise, please contact your local dealer or reseller, or contact PrinterOn directly at:

- Email: sales@printeron.com
- Website: www.printeron.com/company/contact-us.html

2. **Install** or **enable** the PrinterOn Embedded Agent software:
 - a) If the PrinterOn Embedded Agent was not pre-installed on your Samsung printer, you'll need to install the agent software. [Learn how.](#)



OR

- b) If the PrinterOn software was pre-installed on your Samsung printer/MFP, you'll need to [enable the agent software.](#)





3. [Register the PrinterOn software with your PrinterOn service.](#) Registering your printer associates the printer with your PrinterOn Enterprise service.



4. [Print using the PrinterOn service and your Samsung printer.](#) With your printer registered, you're ready to take the PrinterOn service for a test run.



5. [Customize your printer settings and PrinterOn service.](#) Control access to your printer. Define the authentication workflow. Use your Samsung printer to route print jobs to other printers. Add the printer to a Secure Release Anywhere printer pool. Or configure any of the many other settings to take advantage of other features offered by the PrinterOn Service.

1.2 PrinterOn service prerequisites

To use the PrinterOn Embedded Agent with your Samsung printer/MFP, you must meet the following prerequisites:

- **Printer compatibility:** Your printer must be capable of running firmware or application software that is compatible with the PrinterOn service. For a full list of PrinterOn compatible Samsung printers and MFPs, please [click here](#).

PrinterOn license: You must have a valid PrinterOn license and an instance of PrinterOn Enterprise installed on premise to use with the Samsung Printer. The PrinterOn Embedded Agent for Samsung printers is designed to work with a PrinterOn service that has already been installed and configured for use. Please note that the Samsung printer does not include or provide an additional PrinterOn license. The Samsung printer will be associated with an existing PrinterOn license.

- **Administrator privileges:** You must be an administrator of the PrinterOn Enterprise service to register the printer with PrinterOn.
- **Print Delivery Hub:** You must have a Print Delivery Hub (PDH) installed and configured for your PrinterOn Enterprise service. All print jobs submitted using the PrinterOn service are routed through the PDH to the embedded agent.

2

1 Installing the PrinterOn Embedded 2 Agent application

3 Although many Samsung printers come with the PrinterOn Embedded Agent pre-
4 installed, not all do. If your Samsung printer has the Embedded Agent pre-installed, you
5 can skip this chapter and proceed directly to [Chapter 3: Enabling the PrinterOn Embedded
6 Agent on the printer](#).

7 If your Samsung printer does not have the PrinterOn Embedded Agent pre-installed, you
8 can download and install it yourself.

Note: Your printer must be capable of running firmware or application software that is compatible with the PrinterOn Service. For a full list of PrinterOn compatible Samsung printers or MFPs, please [click here](#).

9 You can download the latest version of the PrinterOn Application software from [here](#).

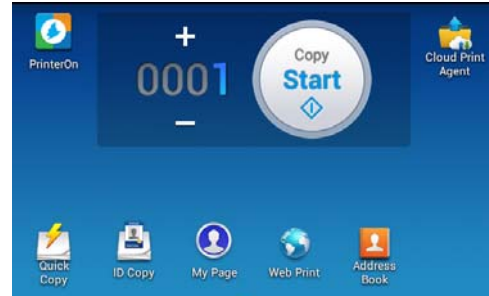
10 You can install the embedded agent software in one of two ways:

- 11 • using the SyncThru Web Service portal
- 12 • using a USB flash drive

13 This chapter describes how to [use the SyncThru Web Service portal](#) to install the
14 embedded agent. For information on how you can install the agent via USB, see [Installing
15 the PrinterOn Embedded Agent via USB](#).

Once the embedded agent software is installed, you'll also need to [configure the PrinterOn Service Settings](#) to ensure that the agent can communicate with your PrinterOn Enterprise service.

Once installed, you'll be able to access the PrinterOn Embedded Agent application from the Device Applications home screen.



Note that when you successfully install the PrinterOn Embedded Agent, the agent is automatically activated by default. You only need to register the printer with PrinterOn to begin printing to it using the PrinterOn service.

2.1 Installing the Embedded Agent using the SyncThru Web Service portal

The SyncThru Web Service (SWS) is a web-based configuration interface that is available on most Samsung printers and MFPs. This interface lets you set up and modify the settings of the printer from any computer that is connected to the same network.

You can use the SyncThru Web Service portal to install the PrinterOn Embedded Agent.

Note: To access the Samsung SWS, you will need the IP address of your printer.

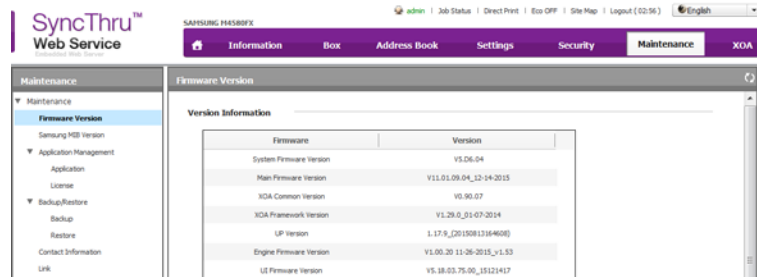
To install the embedded agent using SWS:

1. Enter the Device IP address in the web browser address bar. The SWS Login screen should appear.



2. Enter your SWS Administrator account credentials, then click **Login**.
3. In the main menu at the top of the Home screen, click **Maintenance**. The Maintenance menu appears in the left panel of the window.

41



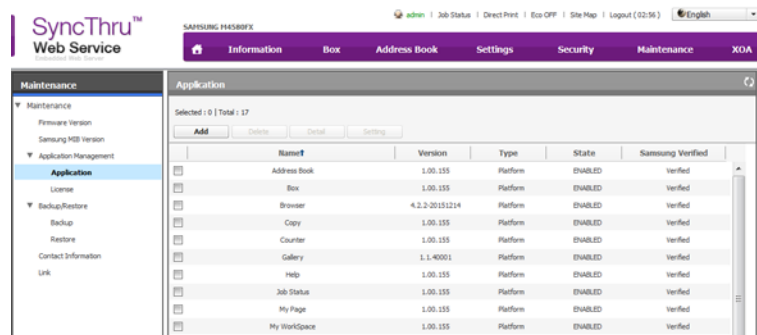
42

43

44

45

- In the Maintenance menu, select **Application Management** > **Application**. The Application panel appears on the right side of the window.

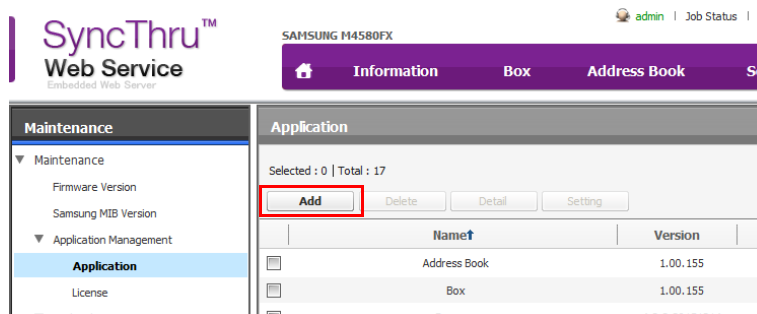


46

47

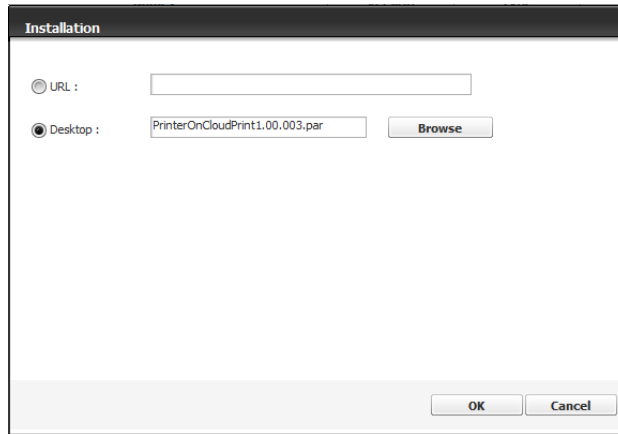
48

- In the Application panel, click **Add**. The Installation dialog appears.

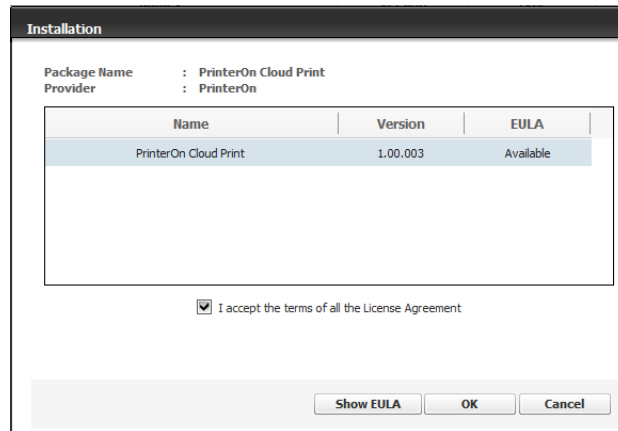


49

- 50 6. In the Installation dialog, click **Browse**, then locate and select the **PrinterOn Cloud**
 51 **Print Agent.PAR** application package.
 52



- 53 7. Click **OK**.
 54 8. To review the License Agreement information, click Available, then click **Show**
 55 **EULA**.
 56 9. Check **I accept the terms of all the License Agreement** to confirm your
 57 acceptance, then click **OK**.
 58
 59



- 60 10. Click **OK**.
 61 11. When the installation is completed, click **OK**.
 62

63 When successfully installed, the PrinterOn print agent software is added to the Application
 64 Management list and the PrinterOn Embedded Agent icon appears on the home screen.

65

Application				
Selected : 0 Total : 17				
<input type="button" value="Add"/> <input type="button" value="Delete"/> <input type="button" value="Detail"/> <input type="button" value="Setting"/>				
	Name†	Version	Type	State
<input type="checkbox"/>	Address Book	1.00.155	Platform	ENABLED
<input type="checkbox"/>	Box	1.00.155	Platform	ENABLED
<input type="checkbox"/>	Browser	4.2.2-20151214	Platform	ENABLED
<input type="checkbox"/>	Copy	1.00.155	Platform	ENABLED
<input type="checkbox"/>	Counter	1.00.155	Platform	ENABLED
<input type="checkbox"/>	Gallery	1.1.40001	Platform	ENABLED
<input type="checkbox"/>	Help	1.00.155	Platform	ENABLED
<input type="checkbox"/>	Job Status	1.00.155	Platform	ENABLED
<input type="checkbox"/>	My Page	1.00.155	Platform	ENABLED
<input type="checkbox"/>	My WorkSpace	1.00.155	Platform	ENABLED
<input type="checkbox"/>	PrinterOn	2.01.009	Custom	ENABLED
<input type="checkbox"/>	Printing App Center	3.02.150317	Platform	ENABLED

66

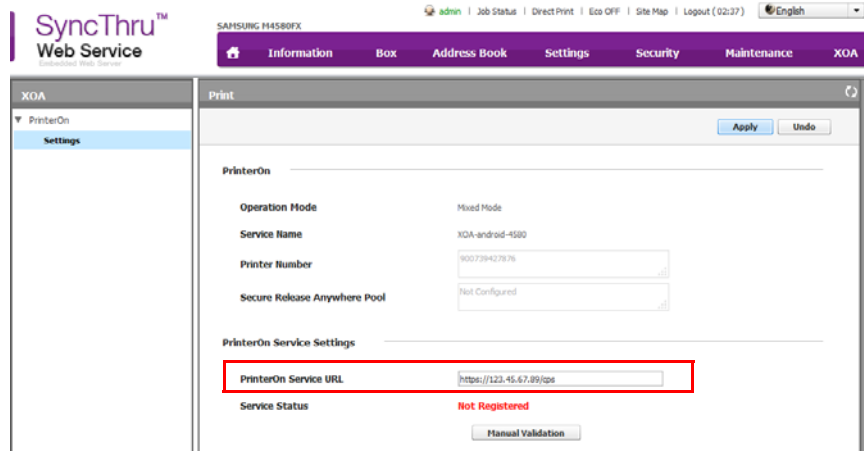
67 2.2 Configuring the PrinterOn Service settings

68 Once the PrinterOn Embedded Agent software is installed, you'll need to configure the
 69 PrinterOn Service Settings. The Embedded Agent needs the Service URL of your PrinterOn
 70 Service so it can communicate with the PrinterOn Server. You can configure this setting
 71 using the SyncThru Web Service.

72 To configure the PrinterOn Service Settings:

- 73 1. Log in to the printer's SyncThru Web Service.
- 74 2. In the main menu at the top of the Home screen, click **XOA** > PrinterOn. The
 75 PrinterOn settings window appears.

76



77

78

79

80

81

82

83

3. In the **PrinterOn Service URL** field, enter the Service URL for your PrinterOn service. Your Service URL should be defined as follows:
`https://<PrinterOn_Server_IP_address>/cps`
4. Click **Apply**.
5. Click **Manual Validation** to validate that the Embedded Agent can communicate with the PrinterOn Server.

Note: After completing this task, note that the Service Status remains **Not Registered**. Although you have set the PrinterOn Service URL so the printer can communicate with the PrinterOn Server, you have not yet registered the printer with PrinterOn. You'll take care of that step in [Chapter 4: Registering your Samsung printer](#).

84 2.3 Next steps

85

86

87

88

89

90

91

92

93

94

95

When you install the PrinterOn Embedded Agent, it is enabled by default. You can now continue on to the following tasks:

1. [Register the PrinterOn Embedded Agent software with your PrinterOn service.](#) Registering your printer associates the printer with your PrinterOn account.
2. [Print using the PrinterOn service and your Samsung printer.](#) With your printer registered, you're ready to take the PrinterOn cloud print service for a test run.
3. [Customize your printer settings and PrinterOn service.](#) Control access to your printer. Define the authentication workflow. Use your Samsung printer to route print jobs to other printers. Add the printer to a Secure Release Anywhere printer pool. Or configure any of the many other settings to take advantage of other features offered by the PrinterOn Service.

3

Enabling the PrinterOn Embedded Agent on the printer

If you have purchased a Samsung printer with the PrinterOn software pre-installed, you'll need to activate, or enable, the PrinterOn Embedded Agent on the printer/MFP. Enabling the agent allows the PrinterOn software to accept and manage incoming print jobs submitted through the various PrinterOn printing workflows.

Note: If your printer did not have the Embedded Agent pre-installed and you installed it yourself, the agent is automatically enabled. You can skip this chapter and proceed to [Chapter 5: Registering your Samsung printer](#).

You can enable the PrinterOn Embedded Agent using the SyncThru Web Service.

Once the embedded agent software is enabled, you'll also need to [configure the PrinterOn Service Settings](#) to ensure that the agent can communicate with your PrinterOn Enterprise service.

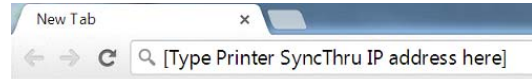
3.1 Enabling the embedded agent using the Samsung SyncThru Web Service

Every Samsung printer includes the SyncThru Web service, a built-in web portal you can use to configure the printer. This method is available for all printer models that come with PrinterOn Agent pre-installed, and can be used to enable the agent even if you don't have access to the physical printer/MFP.

To use this method, you'll need the IP address of the printer/MFP.

To activate the PrinterOn Embedded Agent using the SyncThru Web Service:

1. Launch a web browser.
2. Enter the printer's IP address into the address bar.
3. Click **Login** on the top-right hand of the screen. The Login dialog appears.
4. In the Login dialog, enter your user **ID** and **Password**.

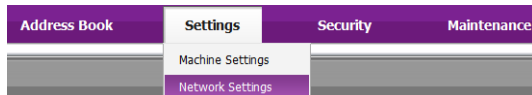


Note: The default SyncThru user credentials are:

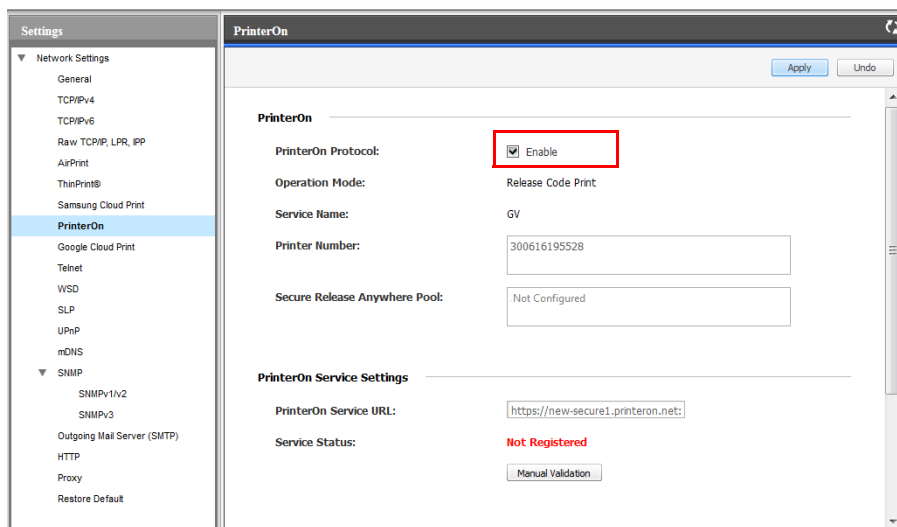
- **ID:** admin
- **password:** sec00000



5. Click **Settings > Network Settings**.



6. In the Network Settings menu in the left pane, click **PrinterOn**. The PrinterOn panel appears in the right pane.
7. In the PrinterOn panel, enable the **PrinterOn Protocol**.



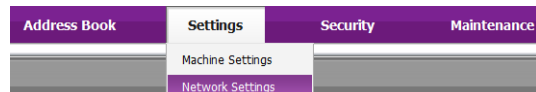
8. Click **Apply**.

3.2 Configuring the PrinterOn Service settings

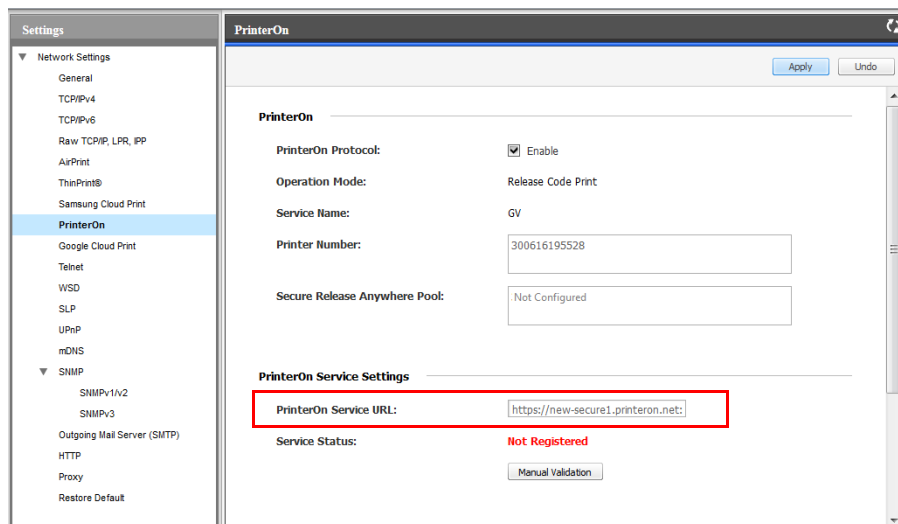
Once the PrinterOn Embedded Agent software is installed, you'll need to configure the PrinterOn Service Settings. The Embedded Agent needs the Service URL of your PrinterOn Service so it can communicate with the PrinterOn Server. You can configure this setting using the SyncThru Web Service.

To configure the PrinterOn Service Settings:

1. Log in to the printer's SyncThru Web Service.
2. In the main menu at the top of the Home screen, click **Settings > Network Settings**.



3. In the Network Settings menu in the left pane, click **PrinterOn**. The PrinterOn panel appears in the right pane.



4. In the **PrinterOn Service URL** field, enter the Service URL for your PrinterOn service. Your Service URL should be defined as follows:

$$\text{https://<PrinterOn_Server_IP_address>/cps}$$
5. Click **Apply**.

6. Click **Manual Validation** to validate that the Embedded Agent can communicate with the PrinterOn Server.

Note: After completing this task, note that the Service Status remains **Not Registered**. Although you have set the PrinterOn Service URL so the printer can communicate with the PrinterOn Server, you have not yet registered the printer with PrinterOn. You'll take care of that step in [Chapter 4: Registering your Samsung printer](#).

3.3 Next steps

Once you have successfully enabled a pre-installed PrinterOn Embedded Agent, you can continue on to the following tasks:

1. [Register the PrinterOn Embedded Agent software with your PrinterOn service](#). Registering your printer associates the printer with your PrinterOn account.
2. [Print using the PrinterOn service and your Samsung printer](#). With your printer registered, you're ready to take the PrinterOn cloud print service for a test run.
3. [Customize your printer settings and PrinterOn service](#). Control access to your printer. Define the authentication workflow. Use your Samsung printer to route print jobs to other printers. Add the printer to a Secure Release Anywhere printer pool. Or configure any of the many other settings to take advantage of other features offered by the PrinterOn Service.


4

Registering your Samsung printer

The last step in the setup process before you can print is to register your printer/MFP with PrinterOn. The registration process connects your Samsung printer with your PrinterOn service, which allows PrinterOn to communicate with the embedded agent on your printer and to make your printer available in your PrinterOn Enterprise directory. Once the printer is listed, users can select it as their destination printer when they print using one of the enabled printing workflows.

Registering your Samsung printer with your PrinterOn Enterprise service is a manual process that you perform in the PrinterOn Configuration Manager.

To register your Samsung printer:

1. Launch and log into the PrinterOn Configuration Manager. For details, see “Exploring the Configuration Manager” in the *PrinterOn Enterprise/Express Configuration Guide*.
2. In the Configuration Manager, click , then click **Show Advanced Settings**.
3. Complete the following tasks:
 - a) [Create the printer listing for the Samsung printer.](#)
 - b) [Add the PrinterOn embedded agent to your PrinterOn service.](#)
 - c) [Configure the embedded agent software.](#)
 - d) [Attach your Samsung printer listing to the PrinterOn Embedded Agent.](#)
4. Once these steps are completed, restart your Samsung printer, or go to the PrinterOn page in the SyncThru and click **Manual Validation**. The configuration changes you made will be applied to the embedded agent.

4.1 Creating the printer listing for the Samsung printer

The first step in the registration is to add a printer listing to your PrinterOn Enterprise service for your Samsung printer.

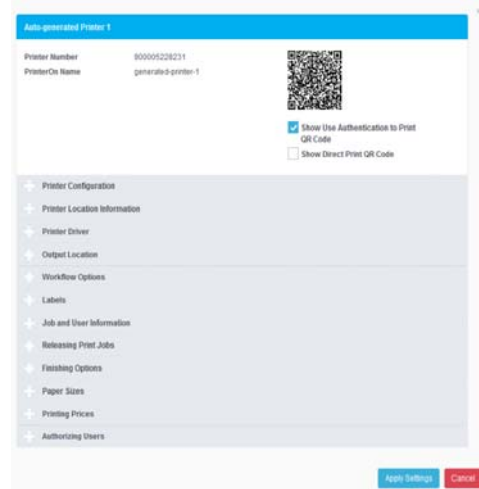
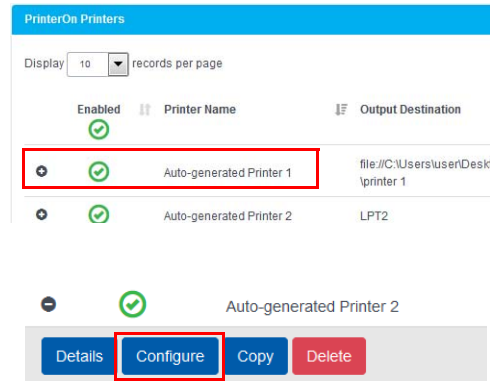
To add a new PrinterOn printer:

1. In to the Configuration Manager, click **Printers**. The Printers tab appears.
2. Locate the **Add Printer** button below the printers list and click it. A new auto-generated printer is added to the printers list. You'll connect this printer listing to your Samsung printer.
3. In the PrinterOn Printers list, click **+** next to the listing for your Samsung printer/MFP. The printer actions appear.
4. Click **Configure**. The Printer Configuration dialog appears.

This dialog lets you configure all the printer settings and supported behavior. Settings are grouped into logical categories. You can expand each of the sections to configure the relevant settings.

To register the printer, you only need to edit a few of these settings. You can return to customize the remaining settings at any time.

5. Complete the following configuration tasks:
 - [Configure the printer identity.](#)
 - [Configure the printer driver.](#)
 - [Define the output destination.](#)
 - [Configure the release settings.](#)



- Once you complete these tasks, click **Apply Settings**. Next, you'll [add the PrinterOn embedded agent to your PrinterOn Enterprise service](#).

4.1.1 Configuring the printer identity

By default, when you add a printer to the printer list, it is named. You should rename the printer to something more meaningful.

To modify the printer name:

- In the Printer Configuration dialog, expand the Printer Configuration Settings.
- Configure the following settings:

Setting	Description
Printer Description	<p>A descriptive label that describes the printer to users. This is the value that users see when searching for a printer, so the value should be unique and descriptive.</p> <p>Note: PrinterOn does not enforce uniqueness on this value, but recommends that you set this value to a simple and easy-to-understand label for the printer.</p>
PrinterOn Name	<p>A unique printer queue name used throughout the software to both identify and organize printers.</p> <p>This value is combined with the email domain to create the email address for the printer, to which users can email print jobs. For example:</p> <p style="text-align: center;">warehouse-printer-1@emailprint.com</p>
External ID	<p>The MAC address for this printer, with no colons. For example, the following MAC address:</p> <p style="text-align: center;">30:cd:a7:c2:32:e5</p> <p>should be entered as:</p> <p style="text-align: center;">30cda7c232e5</p> <p>For information on retrieving your printer's MAC Address, see Appendix B: Locating registration information.</p>

4.1.2 Configuring the printer driver

The printer driver is used to convert documents into a format understood by the printer. Although you can use the universal PrinterOn printer driver selected by default, for best results, you should use the printer driver specific to your printer.

To configure the printer driver:

1. In the Printer Configuration dialog, expand the Printer Driver section. The Printer Driver settings appear.
2. Configure the following settings:

Setting	Description
Printer Driver	<p>The printer driver that the PrinterOn Server uses to process any jobs sent to the printer. Printer drivers are sorted by manufacturer.</p> <ul style="list-style-type: none"> • Select Samsung from the upper list. • Select Universal EMU (any version) from the lower list. <p>Note: If multiple servers are being used for document processing, ensure that the same driver is installed on all servers.</p>
Printer Model Name	<p>The printer model name. This field PrinterOn to optimize output for specific Samsung printer models.</p> <p>If you don't know the specific model, select UnsupportedMono or UnsupportedColor.</p>

4.1.3 Defining the output destination

The output destination setting defines the physical printer, print queue, or file to which the PrinterOn printer listing directs print jobs. You must define the output destination to enable the PrinterOn Server to communicate with your Samsung printer.

To configure the output destination for the Samsung printer:

1. In the Printer Configuration dialog, expand the **Output Location** section. The Output Location settings appear.
2. In the Output Location settings, locate the **Output Destination** field and set the following value:

`tcp://127.0.0.1:9100`

The screenshot shows the 'Output Location' configuration window. It includes the following fields and options:

- Printer is an IPP Printer:**
- Attach Printer To:** CAPS
- Output Destination:** tcp:// 172.16.100.4:9100
- Map:** Map Network
- Allow Printing Directly To PDS:**
- Server Address:** #90052435295
- Print Directly to PDS Only:**
- Use An Alternate/Local Print Delivery Hub To Host Print Jobs:**
- Server Address:** http:// #90052435295

Note: Make sure that you select tcp:// from the drop-down.

3. Uncheck **Allow Printing Directly to PDS**.
4. Check **Use an Alternate/Local Print Delivery Hub to Host Print Jobs**. A new field, **Server Address**, appears below the setting.
5. In the **Server Address** field, enter the fully-qualified network address of the PDH component.

4.1.4 Configuring the release settings

By default, the PrinterOn server is configured to automatically release print jobs to the computer. For security reasons, it is strongly recommended that you modify this setting to force users to enter a release code or their credentials before the printer prints the job.

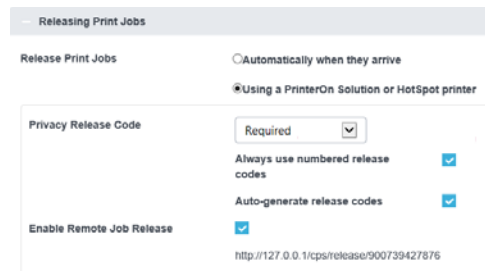
This section outlines how to configure the printer to require release codes to print the job. This release setting is supported by all Samsung printers.

If you have configured authentication for the PrinterOn Server, you can modify the authentication workflow to require the user to enter their username and password to release the job. For information on changing the authentication workflow, see [Configuring the authentication workflow](#).

Note: This workflow is only supported by Samsung printers with a touch panel interface.

To configure the printer to require release codes:

1. In the Printer Configuration dialog, expand the **Releasing Print Jobs** section. The Releasing Print Jobs settings appear.
2. In the Output Location settings, locate the **Release Print Jobs** setting and set it to **Using a PrinterOn Solution or HotSpot Printer**.
3. In the **Privacy Release Code** drop-down, select **Required**, then enable the following settings:



Setting	Description
Always use numbered release codes <i>(Advanced view only)</i>	When checked, generated Release Codes contain only numbers. Available only when Privacy Release Code is set to Required or Optional .
Auto-generate release codes <i>(Advanced view only)</i>	When checked, the server creates unique Release Codes for jobs and supplies them to the user. Available only when Privacy Release Code is set to Required or Optional .
Enable Remote Job Release	When checked, indicates that Secure Remote Release is enabled for this printer, allowing users release print jobs without being present at the printer. Remote job release is supported by the Web, Mobile, and Email Print workflows.

4. Click **Apply Settings**.

With the printer listed completed, you'll now [add the PrinterOn embedded agent to your PrinterOn Enterprise service](#).

4.2 Adding the embedded agent to your PrinterOn service

To allow your PrinterOn Server to communicate with, and deliver print jobs to, the embedded agent on your printer, the agent must be added as a component to your PrinterOn Enterprise service.

The PrinterOn Embedded Agent functions as a built-in Print-Delivery Station (PDS) that receives jobs for the Samsung printer on which it is installed, so you'll need to add a new PDS instance.

To add a PDS instance for your embedded agent:

1. In the Configuration Manager, click **Home** > **Serial Numbers**. The Serial Numbers tab appears.
2. Scroll to the bottom of the page and click **Add Print Delivery Station**.

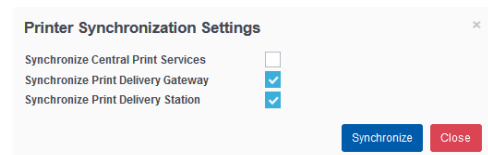
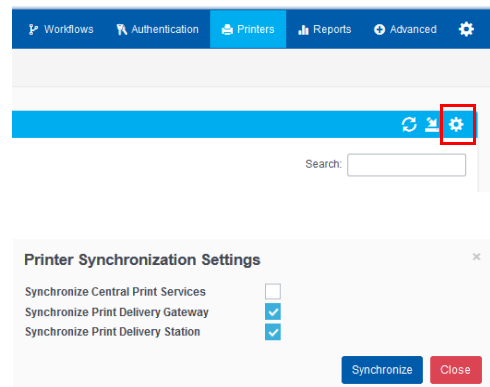


3. In the Add Print Delivery Station dialog, enter the **Server Description** for the embedded.



You'll use this server description to identify the embedded agent when you [configure the embedded agent software](#), so you should make the description meaningful.

4. Click **Add**.
5. In Configuration Manager, click **Printers**. The Printers tab appears.
6. On the Printers tab, above the list of printers, click the Configure Sync icon (⚙️). The Printer Synchronization Settings dialog appears.
7. Check **Synchronize Central Print Services**, then click **Synchronize**.



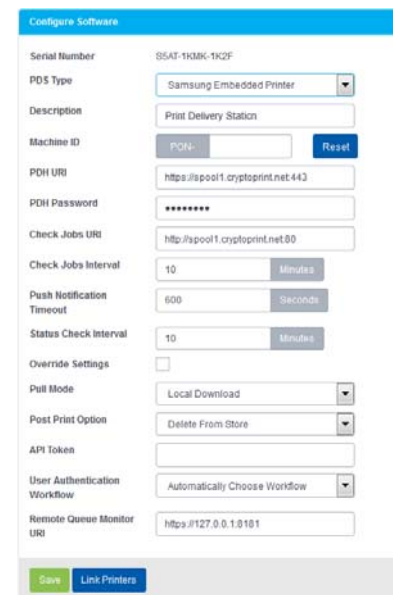
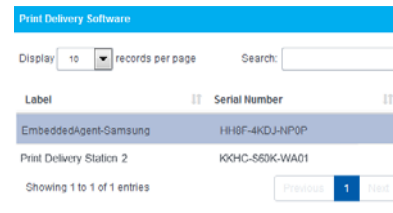
You have now added a new PDS component to your PrinterOn service. Next, you'll [configure the PrinterOn Embedded Agent software](#), to associate your new PDS instance with the embedded agent.

4.3 Configuring the PrinterOn Embedded Agent software

To configure a Print Delivery Station:

1. In the Configuration Manager, click **Printers > Servers**. The Servers tab appears.
2. In the **Print Delivery Software** panel, select the embedded agent's PDS instance. If necessary, you can search a specific PDS instance using the **Search** field.
3. In the **Configure Software** panel, for the **PDS Type**, choose **Samsung Embedded Printer**.

The Configure Software panel is updated to display settings specific to a PrinterOn Embedded Agent on a Samsung printer.



4. In the Configure Software panel, configure the following settings:

Setting	Description
Description	A description of the Print Connector to help you differentiate it from other PDS or HotSpot printers in a deployment. The description is a searchable value.
Machine ID	The serial number or machine identifier of the physical printer or MFP. PrinterOn uses this value to validate the license and connect to the physical printer/MFP. For information on locating your printer's serial number, see Appendix B: Locating registration information .

Setting	Description
PDH URI	<p>The fully qualified domain name of the Print Delivery Hub (PDH) server used by the embedded agent to locate and download new print jobs.</p> <p>The URI should include the URL scheme (http:// or https://) and the port that is configured for the server. When using SSL, the server must be configured with a fully qualified SSL certificate.</p>
PDH Password	<p>The password required to connect to the PDH server located at the PDH URI.</p> <p>This password is configured in the PDH server software and must be supplied by the PDH server administrator.</p>
Check Jobs URI	<p>The fully qualified domain name of the URI that this PDS instance polls to determine if new print jobs are available. Communication with this URI is very lightweight. No job data is communicated via this URI. All communication of Job data occurs via the PDH URI.</p> <p>The URI should include the URL scheme (http:// or https://) and the port (typically a non-SSL port, such as port 80) configured for the server.</p> <p>Note: If using SSL with the embedded agent, the server must be configured with a fully qualified SSL certificate. Use the scheme to determine whether SSL is enabled or not.</p>
API Token	<p>A security token used by the embedded PDS software on the agent to secure communication with PrinterOn Enterprise. This value can be retrieved from the PrinterOn Configuration Manager and copied to this location to be downloaded and used by the software.</p>

5. Click **Save** to save the embedded agent configuration. Next, you'll [attach the printer listing you created earlier to the PrinterOn Embedded Agent](#).

4.4 Attaching the printer listing to the Embedded Agent

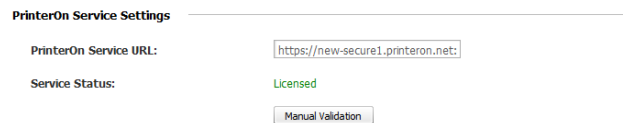
The last step of the registration process is to attach the PrinterOn printer listing for the Samsung printer to the PrinterOn Embedded Agent on the printer. Attaching the printer listing to the agent allows the embedded agent to manage all print jobs submitted to the PrinterOn printer listing.

To attach a printer to the Embedded Agent:

1. At the bottom of the **Configure Software** panel of the Servers tab, click **Link Printers**. The Link Printers dialog appears.



2. In the **Available Printers** list, locate the printer listing for your Samsung printer.
3. Select the printer listing in the **Available Printers** list and move it to the **Linked Printers** list.
4. Click **Apply Settings**.
5. Now that all the configuration is complete, restart your printer, or go to the PrinterOn page in the SyncThru and click **Manual Validation**. The Service Status will be updated to a status of **Licensed**.



4.5 Next steps

Once you have successfully registered your Samsung printer with PrinterOn, you can now complete the following tasks:

1. [Print using the PrinterOn service and your Samsung printer](#). With your printer registered, you're ready to take the PrinterOn service for a test run.
2. [Customize your printer settings and PrinterOn service](#). Control access to your printer. Define the authentication workflow. Use your Samsung printer to route print jobs to other printers. Add the printer to a Secure Release Anywhere printer pool. Or configure any of the many other settings to take advantage of other features offered by the PrinterOn Service.

5

Printing to your Samsung printer using the PrinterOn service

Now that your PrinterOn Embedded Agent activated and your Samsung printer/MFP has been registered with PrinterOn, you can now use the PrinterOn Service to print to your printer.

This chapter will show you how to submit and release a print job using several printing workflows.

5.1 Submitting a print job to your Samsung printer

PrinterOn supports a number of different document submission workflows. By default, when you register your Samsung printer with your PrinterOn service, the printer is configured to support the following print workflows:

- **Web printing:** Users submit print jobs using any connected web browser. Users upload their documents to the Web Print portal and can choose the printer to which to submit the job.
- **Mobile Printing:** Users locate printers and print via the PrinterOn service using the PrinterOn Mobile App on their smartphone or tablet. The PrinterOn Mobile App is available for both iOS and Android.
- **Email printing:** Users email the printer directly using the printer's email address (assigned by PrinterOn when you add a new printer to your service) to print email messages or attachments.

- **Google Cloud Print:** Users submit print jobs via the Google Cloud. You'll need to add your Samsung printer as a Google Cloud printer, then share it to allow other users to print to it. For more information, see "Configuring the Google Cloud Print workflow" in the *PrinterOn Enterprise/Express Configuration Guide*.
- **PrinterOn Queue Management System (PQMS):** Users print to their standard Windows print queues, which are mapped to PrinterOn printers. For more information, see "Configuring the PrinterOn Queue Management System (PQMS) workflow" in the *PrinterOn Enterprise/Express Configuration Guide*.
- **IPP and Native iOS/macOS printing:** Users print using either IPP printers that are mapped to PrinterOn printers, or using native iOS or macOS printing. For more information, see "Configuring IPP and native iOS/macOS print workflows" in the *PrinterOn Enterprise/Express Configuration Guide*.

Detailing how to print using each of these workflows is beyond the scope of this guide. In this guide, we'll focus on the Mobile printing workflow only.

5.1.1 Printing using the Mobile printing workflow

You can print directly to your printer using the PrinterOn Mobile app for iOS or Android.

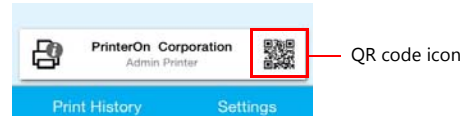
To print using the mobile workflow:

1. Download and install the PrinterOn Mobile app. There are two ways you can download the app onto your mobile device:
 - On your device, search your app store for PrinterOn. The PrinterOn Mobile App is identified by the PrinterOn logo. Select the latest version and download the app.
 - From the browser on your mobile device, browse to www.printeron.com/apps.html, then choose the app for your OS from there.
2. Once it's installed, launch the PrinterOn Mobile App.



3. Connect the mobile app to the Samsung printer. A simple way to do this is to use the mobile app to scan the printer's QR code, displayed in the Configuration Manager:

- a) On the Mobile App Home screen, tap the QR code icon. Scanning a QR code generated by PrinterOn quickly configures the app with printer information.



- b) Log in to the PrinterOn Configuration Manager, open the Printers tab, and display the Configuration dialog for the Samsung printer/MFP (as described in [Creating the printer listing for the Samsung printer](#)).

- c) At the top of the dialog, notice the QR code. Scan the QR code displayed in the Configuration Manager. The app is configured with the printer information.

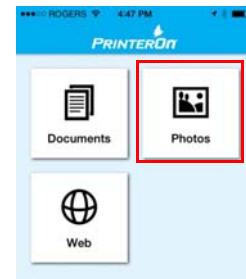



4. Print your document. For this example, we'll show how to print a photo.

- a) On the Mobile App home screen, tap **Photos**.

- b) Select the photo you want to print.

- c) Tap the Printer icon in the top right corner. A preview of the job is displayed.



- d) To select copies and page range where applicable, tap  in the top right corner.

- e) Tap **Print** to submit your job.

Note: You can tap **Print History** to view the progress of your print job.

5. If necessary, [enter the Secure Release Code](#) on the printer to release your documents to the printer.

5.2 Releasing print jobs

As part of the registration process, you configured your Samsung Printer to use secure release. This means that users must supply a release code before the printer is able to print the job.

After printing, users will be provided with a Secure Release Code. The user can release the job anytime within 72 hours of submission of the print request.

The process differs slightly, depending on what type of printer you have.

- [Releasing print jobs on printers with two- or four-line LCD displays.](#)
- [Releasing a print job on a printer with a touch panel.](#)

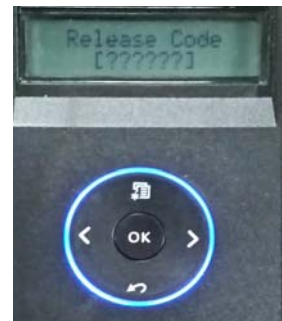
Note: If you have a printer with a touch panel you can configure the printer to require the user's username and password instead of a release code. To use this workflow, you must have authentication enabled for your PrinterOn Service, and you must modify the authentication workflow used by the embedded agent.

For more information, see [Restricting printer access.](#)

5.2.1 Releasing print jobs on printers with two- or four-line LCD displays

To release a print job on a printer with a two- or four-line LCD display:

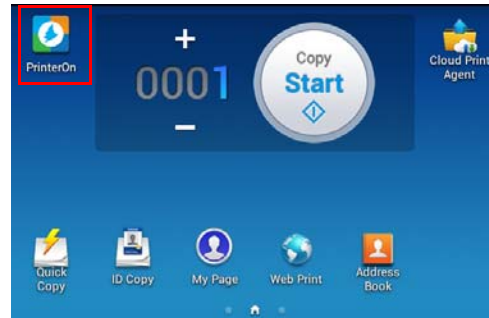
1. Press the Pound button (#) on the LCD display for at least one full second.
2. Enter the Secure Release Code you received after submitting your print job.
3. Press **OK**.
4. Collect your print job.



5.2.2 Releasing a print job on a printer with a touch panel

To release a print job on a printer with a 4.3-, 7- or 10.1-inch touch display:

1. On the Samsung printer display, tap the PrinterOn icon.



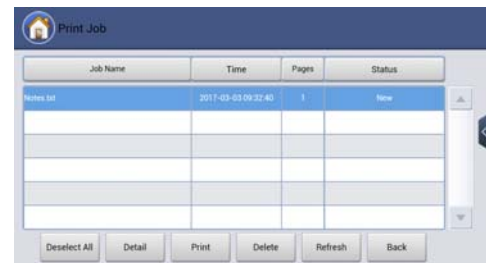
2. Enter the Secure Release Code you received after submitting your print job and tap **OK**.

The Job List page appears, showing the print job associated with the given release code.



3. On the Job List page, select the print job, then tap **Print**.

The print job is updated with a status of **Printed**.



4. Collect your print job.

5.3 Next steps

Now that you have successfully tested the printer with your PrinterOn service, you can [customize your printer settings and PrinterOn service](#).

6

Configuring and customizing the embedded agent

After completing the registration process, your PrinterOn service is automatically updated with a new PrinterOn printer and PrinterOn Print Delivery Station, which are both associated with your Samsung printer.

At this point, you can begin to configure and customize the printer settings and your PrinterOn service using the Configuration Manager.

When you install/activate the PrinterOn embedded agent, the default settings are sufficient for most situations. However, you may want to adjust some settings, if, for example, you want to charge users to use your printer, or you want to change release behavior.

There are also a number of more advanced features you may want to make use of with your embedded agent:

- [Restricting printer access](#)
- [Using your Samsung printer as a job router](#)
- [Adding the printer to a Secure Release Anywhere pool](#)

Note: Each time you configure the PrinterOn service in Configuration Manager, you must restart your printer, or go to the PrinterOn page in the SyncThru Web Service and click **Manual Validation** to apply the changes to the embedded agent.

6.1 Restricting printer access

You can restrict access to your Samsung printer by enabling authentication on the Embedded Agent and using your existing authentication method, such as LDAP or a third-party identity management service, to control who can access the printer. Those users who have permission to access the printer must provide their credentials in order to access the Embedded Agent UI.

When authentication is supported and properly configured, you can also configure settings to control the authentication workflow.

To enable authentication, you need to complete the following tasks:

1. In the Configuration Manager, configure your Authentication method. See “Configuring Authentication Settings” in the *PrinterOn Enterprise/Express Configuration Guide* for details on how to configure these settings.
2. [Enabling authentication for the embedded agent.](#)
3. [Configuring the authentication workflow.](#)
4. Restart the printer, or go to the PrinterOn page in SyncThru Web Service and click **Manual Validation**.

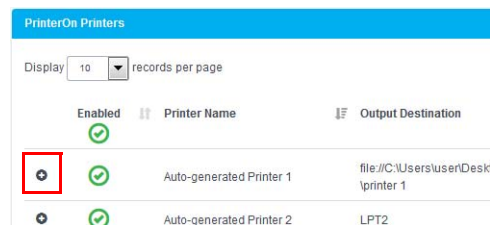
6.1.1 Enabling authentication for the embedded agent

To add security to your print solution, you can enable authentication for PrinterOn Embedded Agent. When Authentication is enabled, the user must enter their user credentials before they are permitted to access the printer.

You must also configure your Authentication method in the Configuration Manager. See “Configuring Authentication Settings” in the *PrinterOn Enterprise/Express Configuration Guide* for details.

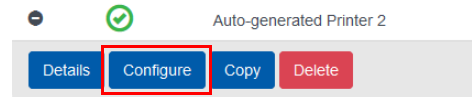
To enable authentication:

1. In the Configuration Manager, click **Printers**. The Printers tab appears, displaying a list of currently available printers. Notice the icon to the left of each entry.



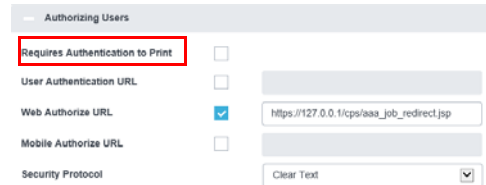
Enabled	Printer Name	Output Destination
<input checked="" type="checkbox"/>	Auto-generated Printer 1	file://C:\Users\lusenDesk\printer 1
<input checked="" type="checkbox"/>	Auto-generated Printer 2	LPT2

- In the PrinterOn Printers list, click **+** next to the listing for your Samsung printer/MFP. The printer actions appear.



- Click **Configure**. The Printer Configuration dialog appears.

- Locate and expand the **Authorizing Users** settings.



- In the Authorization settings, click **Requires Authentication to Print**.

- Click **Apply Settings**.

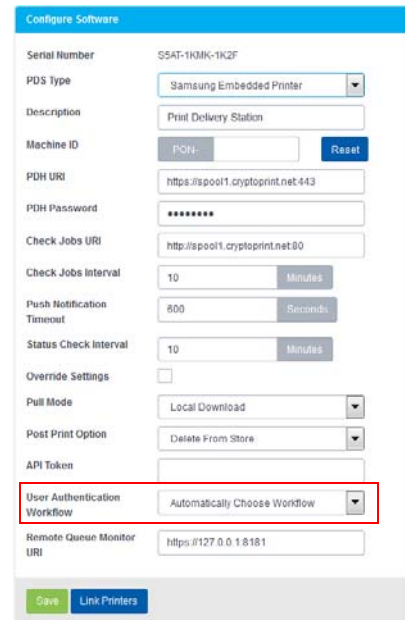
6.1.2 Configuring the authentication workflow

To configure the authentication workflow for the embedded agent:

- In the Configuration Manager, click **Printers > Servers**. The Servers tab appears.

Your Samsung printer should be listed in the **Print Delivery Software** panel. Locate and select your Samsung printer. If necessary, you can search for the printer using the **Search** field.

- In the **Configure Software** panel, locate the User Authentication drop-down, then select a [workflow option](#) from the drop-down.



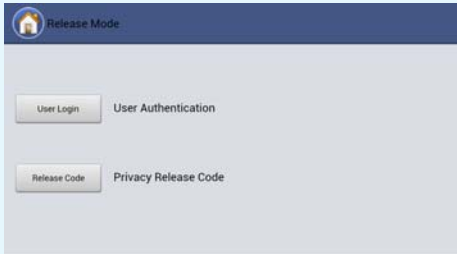
- Restart the printer, or go to the PrinterOn page in the SyncThru Web Service and click **Manual Validation**.

6.1.2.1 Authentication workflow settings

The User Authentication Workflow settings lets you specify how the Embedded Agent determines what screen should initially be displayed to the user when they access the printer/MFP.

You can select one of the following four values:

Setting	Description
Automatically Choose Workflow	The HotSpot determines the most appropriate screen to display, based on the other configuration settings. This is the default setting.
Always Display Home Screen	The HotSpot always displays two options to the user: User Login, which takes them to the User Login Page; and Release Code, which takes them to the Release Code Page.
Always Display User Login	The HotSpot displays the User Login Page.
Always Display Release Code	The HotSpot displays the Release Code Page.



6.2 Using your Samsung printer as a job router

If you have multiple printers licensed for your PrinterOn Service, you can attach them to the PrinterOn Embedded Agent on your Samsung printer and let the agent manage the distribution of print jobs to those printers.

Note: You must have a valid PrinterOn license for each printer that you attach to your Samsung printer. Your PrinterOn license specifies the number of printers that you can use with your PrinterOn service.

To attach a printer to the Embedded Agent:

1. In the Configuration Manager, click **Printers > Servers**. The Servers tab appears.

The screenshot displays two side-by-side panels in the Configuration Manager interface.

Print Delivery Software Panel:

- Display: 10 records per page
- Search: [Search field]
- Table with columns: Label, Serial Number
- Table content:

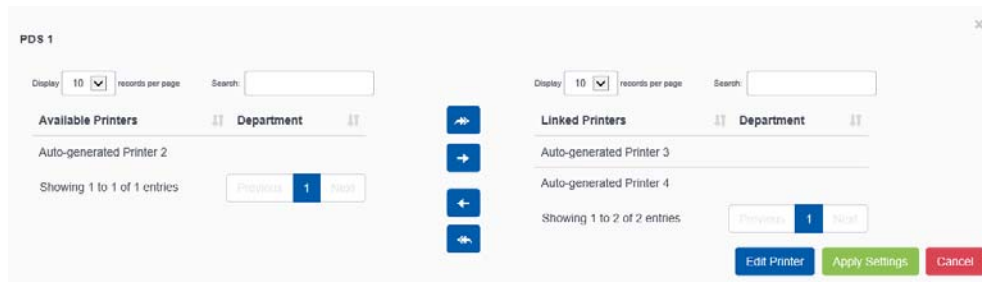
Label	Serial Number
Print Delivery Station	6CY0-B05S-Y0C4
Print Delivery Station 2	KXHC-S6DK-WA01
- Showing 1 to 1 of 1 entries
- Buttons: Previous, 1, Next

Configure Software Panel:

- Serial Number: S5AT-1KMK-1K2F
- PDS Type: Samsung Embedded Printer
- Description: Print Delivery Station
- Machine ID: POH- [Reset]
- PDH URI: https://spool1.cryptoprint.net:443
- PDH Password: [Masked]
- Check Jobs URI: http://spool1.cryptoprint.net:80
- Check Jobs Interval: 10 Minutes
- Push Notification Timeout: 800 Seconds
- Status Check Interval: 10 Minutes
- Override Settings: [Unchecked]
- Pull Mode: Local Download
- Post Print Option: Delete From Store
- API Token: [Empty]
- User Authentication Workflow: Automatically Choose Workflow
- Remote Queue Monitor URI: https://127.0.0.1:8181
- Buttons: Save, Link Printers

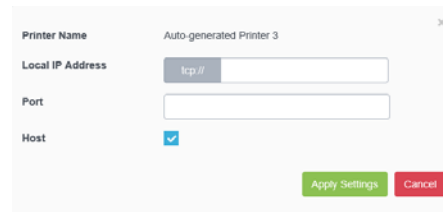
2. In the **Print Delivery Software** panel, locate and select your Samsung printer. If necessary, you can search for the printer using the **Search** field.

- In the **Configure Software** panel, select **Link Printers**. The Link Printers dialog appears.



- Link the printers to the PDS by moving them from the **Available Printers** list to the **Linked Printers** list.

- Because you're configuring an embedded agent, you'll also need to edit the printer connection settings. Click **Edit Printer**. The Edit Printer dialog appears.



- Configure the following settings as necessary:

Setting	Description
Local IP Address	The local IP address of the printer.
Port	The port the printer uses for communication.
Host (Embedded PDS only)	When enabled, indicates that the device has an embedded PDS agent that serves other devices.

- Click **Apply Settings** to return to the Link Printers dialog.
- Click **Apply Settings**.
- Restart the printer, or go to the PrinterOn page in the SyncThru Web Service and click **Manual Validation**.

6.3 Adding the printer to a Secure Release Anywhere pool

Secure Release Anywhere pools are groups of PrinterOn printers. To the user, a printer pool appears as just another printer that they select when printing. However, instead of distributing jobs to a single output destination, a printer pool can distribute print jobs to any of its member printers. Users can go to the output destination of any member printer and pull the print job down using their credentials or a secure release code.



Installing the PrinterOn Embedded Agent via USB

If you don't want to use the SuncThru Web Service portal to install the PrinterOn Embedded Agent, you can also install the embedded agent software from a USB flash drive.

To install the software from a USB flash drive:

1. Select **Machine Setup > Others > Application Management**.
2. Log in using the Administrator account credentials.
3. Copy the PrinterOn Embedded Agent installer package to a USB flash drive.
4. Connect the USB flash drive to the device.

When the flash drive is inserted, the **Install** button should become activated. If it does not, it usually signifies that the USB memory stick was not detected.

5. Click the **Install** button.
6. Select the PrinterOn Embedded Agent application package. The License Agreement popup window appears.
7. Select **I accept the terms of all the License Agreement** to confirm your acceptance, then click **OK**.
8. After the installation is completed, click **OK**.
9. Select **Machine Setup > Others > Application Management > Application**.

When successfully installed, the PrinterOn print agent software is added to the Application Management list and the PrinterOn Embedded Agent icon appears on the home screen.

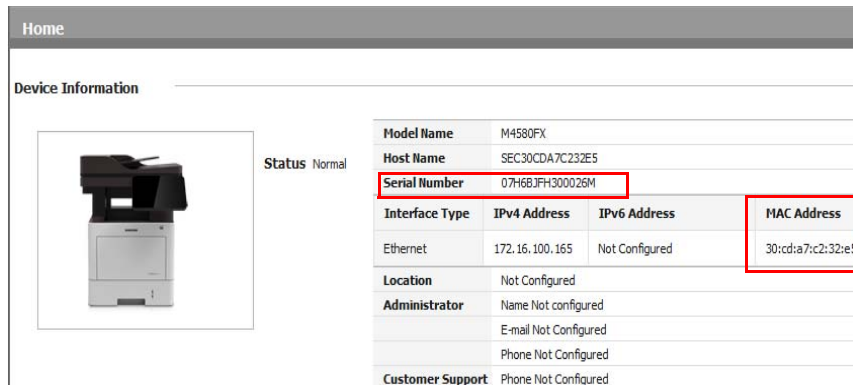
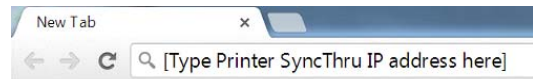
B

Locating registration information

To register your printer, you need the [serial number and Mac address](#) of your Samsung printer. If you don't have your printer's serial number or MAC address on hand, you can locate the values from the SyncThru web service.

To acquire your printer identification information from SyncThru:

1. Launch a web browser and enter the printer's IP address into the address bar. The Home screen appears.
2. On the SyncThru Home screen, in the Device Information panel, locate the Serial Number and MAC Address values.

A screenshot of the SyncThru Home screen. The page title is "Home". Under the "Device Information" section, there is a printer icon and a "Status: Normal" label. To the right is a table of device information. The "Serial Number" and "MAC Address" fields are highlighted with red boxes.

Model Name	M4580FX		
Host Name	SEC30CDA7C232E5		
Serial Number	07H6BJFH300026M		
Interface Type	IPv4 Address	IPv6 Address	MAC Address
Ethernet	172.16.100.165	Not Configured	30:cd:a7:c2:32:e5
Location	Not Configured		
Administrator	Name Not configured		
	E-mail Not Configured		
	Phone Not Configured		
Customer Support	Phone Not Configured		



Troubleshooting the PrinterOn Embedded Agent for Samsung

Locating the PrinterOn Embedded Agent log files

The PrinterOn Embedded Agent logs all agent activity in a log file. Should you have problems printing with the embedded agent on your Samsung printer or MFP, you may need to access the log files to help diagnose the problem.

The PrinterOn Embedded Agent saves log information to the following file:

- On devices with the agent pre-installed:
`Http://<printer_IP>/sws/service_mode_printeron.html`
- On devices where the user installs the agent:
`http://<printer_IP>/shp_pon.sws/adminpages/PonTechModeView.sws`

where `<printer_IP>` is the IP address of the Samsung printer or MFP.

Trademarks and service marks

The following are trademarks or registered trademarks of PrinterOn Inc. in Canada and other countries:

PrinterOn®, PrintAnywhere®, Print Simply Anywhere®, PrintWhere®, PRINTSPOTS®, the PrinterOn Logo, the PrinterOn Symbol, PrintConnect™, Secure Release Anywhere™, and PrintValet™ are trademarks and/or registered trademarks of PrinterOn.

The following are trademarks or registered trademarks of other companies:

Windows, Internet Explorer, Microsoft Word, Microsoft Excel, Microsoft PowerPoint, and Microsoft Visio are trademarks or registered trademarks of Microsoft Corporation.

iPad, iPhone, AirPrint, and OS X are trademarks or registered trademarks of Apple.

iOS is a trademark or registered trademark of Cisco in the U.S. and other countries and is used by Apple under license.

Android, Chrome OS, and Chromebook are trademarks or registered trademarks of Google Inc.

BlackBerry is a registered trademark of BlackBerry, Ltd.

Other brands and their products are trademarks or registered trademarks of their respective holders.

Copyright notice

© Copyright 2017 by PrinterOn Inc.

All rights reserved. No part of this publication may be reproduced, stored in a retrieval system, or transmitted, in any form or by any means, electronic, mechanical, photocopy, recording, or otherwise, without the prior written permission of PrinterOn Inc.

Disclaimer:

PrinterOn Inc. makes no warranty with respect to the adequacy of this documentation, programs, or hardware, which it describes for any particular purpose, or with respect to the adequacy to produce any particular result. In no event shall PrinterOn Inc. be held liable for special, direct, indirect, or consequential damages, losses, costs, charges, claims, demands, or claim for lost profits, fees, or expenses of any nature or kind.

May 30, 2017